


Rail Programs and Facilities Engineering Quarterly Report


Station Improvements



Project	Cost (millions)	2013	2014	2015	2016	2017	2018	2019	2020	
Laguna Niguel/Mission Viejo Metrolink Station/Americans with Disabilities Act Ramp Improvements	\$8.52									
Orange Metrolink Station Parking Structure	\$18.55									
Placentia Metrolink Station (on hold)	\$23.42									
Anaheim Canyon Metrolink Station Improvements	\$20.05									
Anaheim Regional Transportation Intermodal Center	\$187.00									
Fullerton Transportation Center Elevator Upgrades	\$3.50									
Total	\$261.04	Note: All Costs do not include right-of-way (ROW) expenses.								

 Project Definition Report

 Project Approval/Environmental Document (PA/ED)

 Final Design

 Construction

 California Transportation Commission Funding Approval

LOSSAN Grade Separation Projects



Schedule / Cost

Project	Cost (millions)	2013	2014	2015	2016	2017
17th Street - Santa Ana	\$55.00					
Sand Canyon Avenue - Irvine	\$56.00					
Santa Ana Boulevard - Santa Ana (Santa Ana Lead) ¹	\$73.30					
State College Boulevard - Anaheim ²	\$92.00					
TOTAL	\$276.30					

PA/ED
 Preliminary Engineering (PE)
 Final Design
 Construction

¹ Latest City estimate

² Pending \$46 Million funding from California High-Speed Rail Authority

Rail Corridor Improvements



Schedule / Cost

Project	Cost (millions)	2013	2014	2015
San Clemente Beach Trail Crossings Audible Warning System	\$ 4.50	[Construction]		
Laguna Niguel-San Juan Capistrano Passing Siding	\$ 25.27	[PA/ED]	[Final Design]	[Final Design]
Positive Train Control Program (Orange County Transportation Authority (OCTA) Share)	\$ 39.92	[Construction]		
Rail ROW Slope Stabilization	\$ 2.00	[Planning]	[PA/ED]	[Final Design]
Total	\$ 71.69			

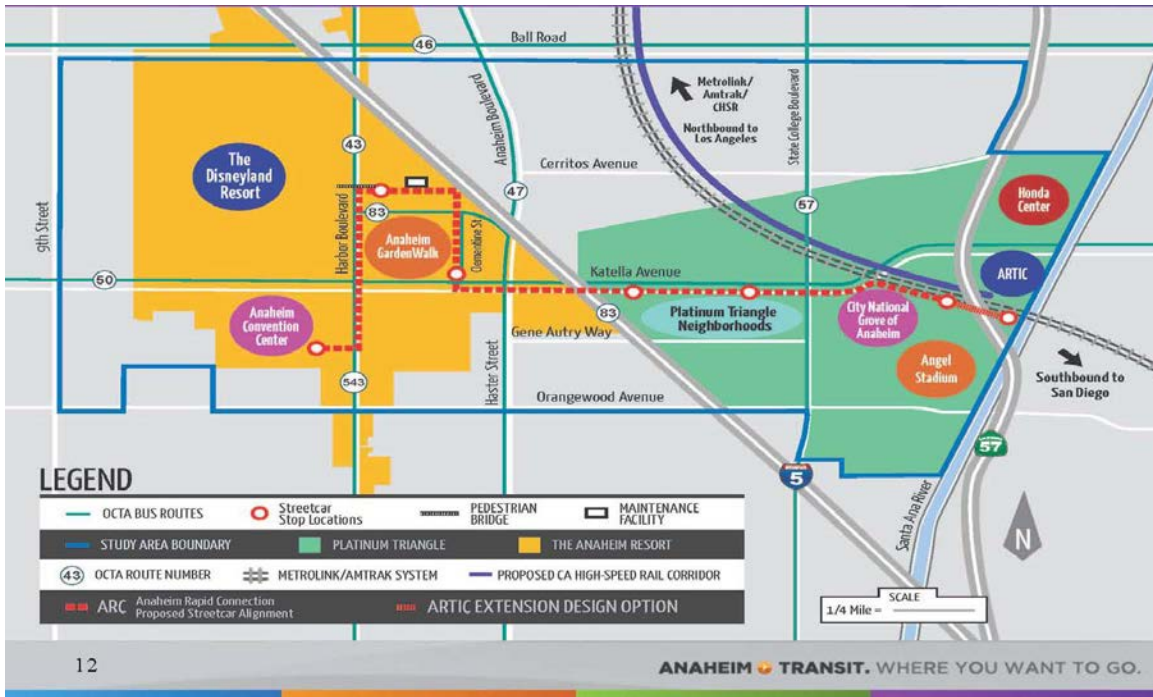
[PA/ED]

[Final Design]

[Construction]

[Planning]

Transit Extensions to Metrolink: Anaheim Rapid Connection



Development Funding Through PE	
Project Phase	Approved Budget (including City Match)
Initial Needs Assessment	\$100,000
Alternatives Analysis and Environmental Clearance	\$6,000,000
Project Development/PE *	\$13,352,000
TOTAL	\$19,452,000

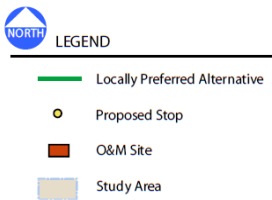
*PE funds accessible pending OCTA and Federal Transit Administration (FTA) approval

Schedule	2013	2014	2015	2016	2017	2018	2019	2020
Alternatives analysis, state/federal environmental clearance, and conceptual engineering								
Project Development/Engineering*								
Construction**								

*Phase partially funded

** Phase not funded

Transit Extensions to Metrolink: Santa Ana/Garden Grove Fixed-Guideway



Development Funding Through PE	
Project Phase	Approved Budget (including City Match)
Initial Needs Assessment	\$100,000
Alternatives Analysis and Environmental Clearance	\$6,488,000
Project Development/PE*	\$5,541,700
TOTAL	\$12,129,700

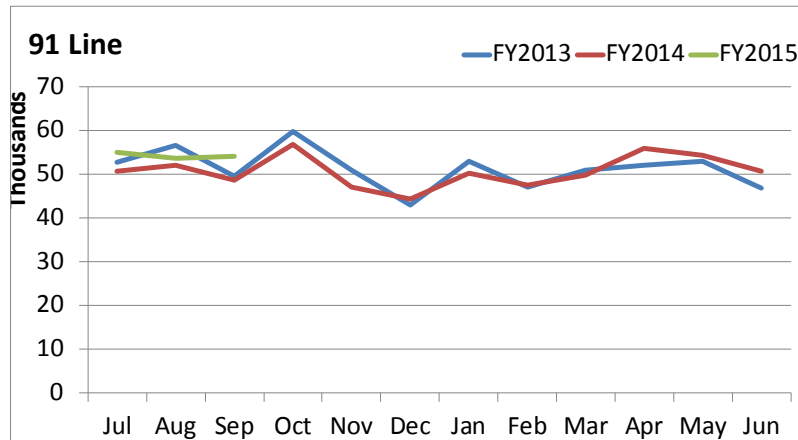
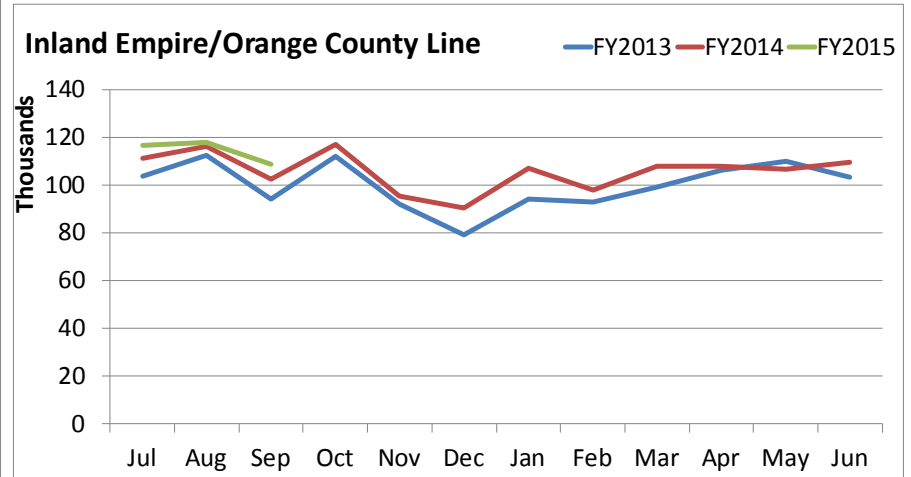
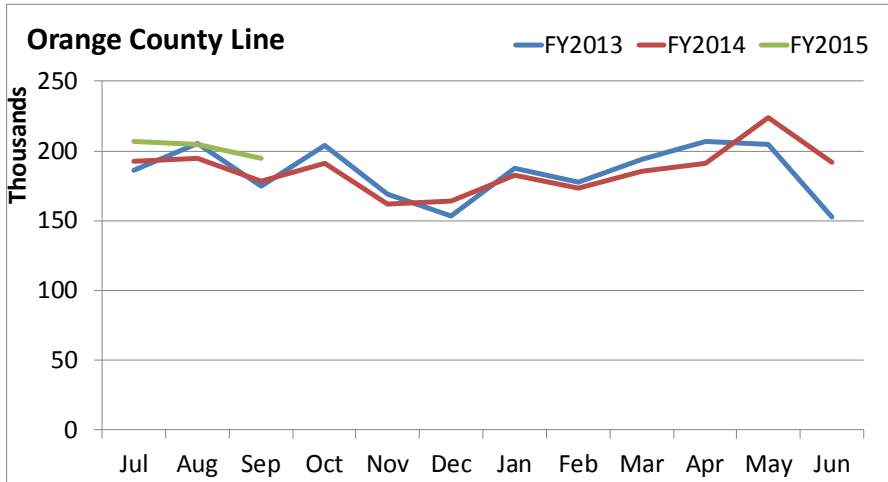
*PE funds accessible pending OCTA and FTA approval

Schedule	2013	2014	2015	2016	2017	2018	2019
Alternatives analysis, state/federal environmental clearance, and conceptual engineering	[Light blue bar]						
Project Development/Engineering*			[Light blue bar]				
Construction**						[Dark blue bar]	

* Phase partially funded

** Phase not funded

Metrolink Ridership



Rail Operations

Project



Angels Express 2014

- 43,973 total boardings for all 51 games served
- Weekday 7:05 p.m. home games
- Orange County Line 51 weekday games
- Inland Empire - Orange County Line 11 Friday games
- \$208,520 grant from the Mobile Source Air Pollution Review Committee (Tier 2 locomotives)
- July Promotion - Nearly 600 kids 18 years old and under rode the Angels Express for free on Monday through Thursday 7:05 p.m. home games
- The highest Angels Express ridership to date occurred on Friday, August 29, 2014, with 2,794 passengers
- The Angels went to the playoffs and the Angels Express carried 4,118 passengers on special and regular service to the 2 postseason home games

Weekend 91 Line Service

- 91 Line Weekend Service launched on July 5, 2014
- Two Northbound and Two Southbound trips on Saturdays and Sundays
- Averaged at 3,873 passengers per month in July, August, and September 2014

Rail Safety Month

- September 2014 was rail safety month
- A press conference was held on September 4, 2014 in partnership with Metrolink and Operation Lifesaver
- Mark Kalina, Operation Lifesaver representative, Orange County Supervisor Todd Spitzer, and Chief Executive Officer Darrell Johnson spoke on behalf of Rail Safety



Facilities Engineering

Project	Cost (millions)	2013	2014	2015
GWTC - Surface Parking	\$ 1.50			
Irv CC Base - Maintenance Building Heating, Ventilating, Cooling	\$ 0.76			
GG Base - Heating, Ventilation, and Air Conditioning Replacement Operations Building	\$ 0.45			
Ana, GG, Irv SC Bases - Underground Storage Tanks Removal	\$ 1.18			
NPTC - Trellis Beam Repair	\$ 0.06			
GG Base - Vehicle Inspection Station Equipment Canopy	\$ 0.17			
All Bases - Bus Wash Run-Off Mitigation	\$ 0.66			
All Bases - Brake Check Pit Safety Nets	\$ 0.13			
Ana, GG Bases - Paint and Coatings	\$ 0.45			
BPNR - Pavement Reconstruction	\$ 0.15			
Irv CC Base - Facility Modifications	\$ 0.60			
TOTAL	\$ 6.11			

■ Final Design ■ Bid ■ Construction

OCTA Facility Legend:

Ana	Anaheim Bus Base
GG	Garden Grove Bus Base
Irv CC	Irvine Construction Circle Bus Base
Irv SC	Irvine Sand Canyon Bus Base
BPNR	Brea Park-and-Ride
GWTC	Golden West Transportation Center
NPTC	Newport Transportation Center

